

\$410,000 - 404, 59201 Range Road 95, Rural St. Paul County

MLS® #E4407532

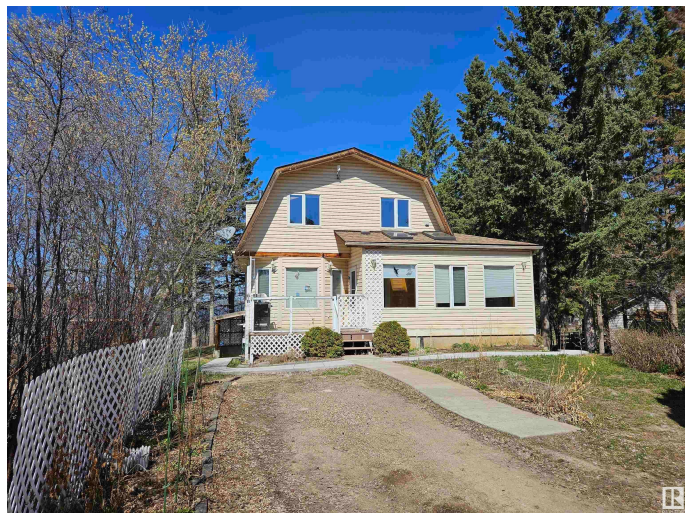
\$410,000

3 Bedroom, 2.00 Bathroom, 2,014 sqft

Rural on 0.75 Acres

Vincent Lake, Rural St. Paul County, AB

A Stunning Home at the Lake, Vincent Lake, close to St. Paul and it's many amenities. This lovely 2 Storey home features an amazing kitchen which is the heart of the home, dining room and living room with walk out deck and a beautiful fireplace, eating area and sunroom with walk out door to the deck as well, family room off to the side which could be a multi purpose area for your family. Upper floor features a gorgeous primary bedroom with gas fireplace and a walk out deck and 2 additional bedrooms, and a 3pc bath. The basement is partially finished, and has potential for a 4th bedroom and great storage and has a gas fireplace and a walk out basement entrance. Double garage. Much more. Serene, picturesque, lovely.



Built in 2004

Essential Information

| | |
|----------------|-----------|
| MLS® # | E4407532 |
| Price | \$410,000 |
| Bedrooms | 3 |
| Bathrooms | 2.00 |
| Full Baths | 1 |
| Half Baths | 2 |
| Square Footage | 2,014 |

| | |
|------------|------------------------|
| Acres | 0.75 |
| Year Built | 2004 |
| Type | Rural |
| Sub-Type | Detached Single Family |
| Style | 2 Storey |
| Status | Active |

Community Information

| | |
|-------------|--------------------------|
| Address | 404, 59201 Range Road 95 |
| Area | Rural St. Paul County |
| Subdivision | Vincent Lake |
| City | Rural St. Paul County |
| County | ALBERTA |
| Province | AB |
| Postal Code | T0A 3A0 |

Amenities

| | |
|----------------|---|
| Features | Carbon Monoxide Detectors, Closet Organizers, Deck, Detectors Smoke, Exterior Walls- 2"x6", Hot Wtr Tank-Energy Star, Lake Privileges, Skylight, Vaulted Ceiling, Vinyl Windows, Walkout Basement, Wood Windows, Natural Gas Stove Hookup |
| Parking Spaces | 1 |

Interior

| | |
|-------------------|--|
| Interior Features | ensuite bathroom |
| Heating | Forced Air-1, See Remarks, Natural Gas, Wood |
| Fireplace | Yes |
| Stories | 2 |
| Has Basement | Yes |
| Basement | Full, Partially Finished |

Exterior

| | |
|-------------------|---|
| Exterior | Wood |
| Exterior Features | Environmental Reserve, Fruit Trees/Shrubs, Lake Access Property, Lake View, No Back Lane, Not Fenced, Partially Landscaped, Treed Lot, Vegetable Garden |
| Construction | Wood |
| Foundation | Concrete Perimeter |

Additional Information

| | |
|----------------|----------------------|
| Date Listed | September 20th, 2024 |
| Days on Market | 352 |
| Zoning | Zone 60 |



DATA IS DEEMED RELIABLE BUT IS NOT GUARANTEED ACCURATE BY THE REALTORS® ASSOCIATION OF EDMONTON. COPYRIGHT 2025 BY THE REALTORS® ASSOCIATION OF EDMONTON. ALL RIGHTS RESERVED. Trademarks are owned or controlled by the Canadian Real Estate Association (CREA) and identify real estate professionals who are members of CREA (REALTOR®, REALTORS®) and/or the quality of services they provide (MLS®, Multiple Listing Service®)

Listing information last updated on September 7th, 2025 at 7:47am MDT