

\$89,900 - #129 3510 Ste. Anne Trail, Rural Lac Ste. Anne County

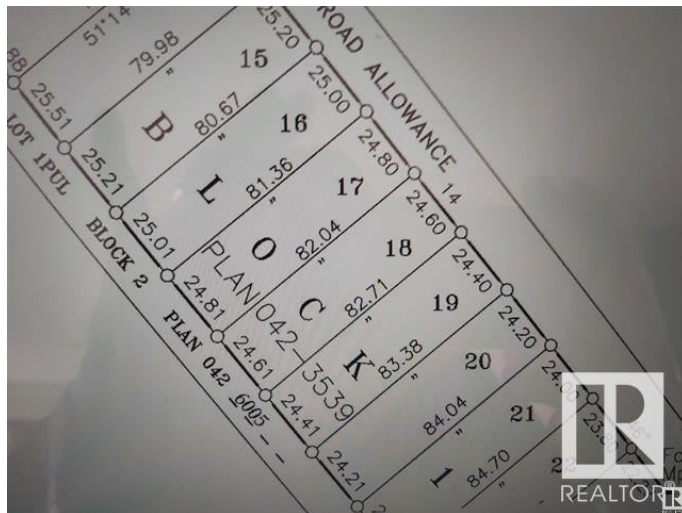
MLS® #E4421489

\$89,900

0 Bedroom, 0.00 Bathroom,
Rural on 0.50 Acres

Lac Ste Anne, Rural Lac Ste. Anne County,
AB

BUILD YOUR NEW HOME ON THIS 1/2
ACRE CLEARED LOT IN LAC STE. ANNE.
THE LOT IS CLOSE TO THE LAKE AND
MINUTES FROM ALBERTA BEACH AND
AMENITIES. 40 MINUTES TO EDMONTON
WEST END. NATURAL GAS, POWER,
TELEPHONE ARE AT THE ROADWAY.



Essential Information

MLS® #	E4421489
Price	\$89,900
Bathrooms	0.00
Acres	0.50
Type	Rural
Sub-Type	Vacant Lot/Land
Status	Active

Community Information

Address	#129 3510 Ste. Anne Trail
Area	Rural Lac Ste. Anne County
Subdivision	Lac Ste Anne
City	Rural Lac Ste. Anne County
County	ALBERTA
Province	AB
Postal Code	T0E 0A0

Exterior

Exterior Features Boating, Flat Site, Golf Nearby, No Through Road, Private Setting, Schools, Shopping Nearby

Additional Information

Date Listed February 13th, 2025
Days on Market 164
Zoning Zone 71

DATA IS DEEMED RELIABLE BUT IS NOT GUARANTEED ACCURATE BY THE REALTORS® ASSOCIATION OF EDMONTON. COPYRIGHT 2025 BY THE REALTORS® ASSOCIATION OF EDMONTON. ALL RIGHTS RESERVED.Trademarks are owned or controlled by the Canadian Real Estate Association (CREA) and identify real estate professionals who are members of CREA (REALTOR®, REALTORS®) and/or the quality of services they provide (MLS®, Multiple Listing Service®)
Listing information last updated on July 27th, 2025 at 1:02pm MDT