

## \$749,900 - Hwy 2a And Rr 245, Rural Leduc County

**\$749,900**

None, Rural Leduc County, AB

## Essential Information

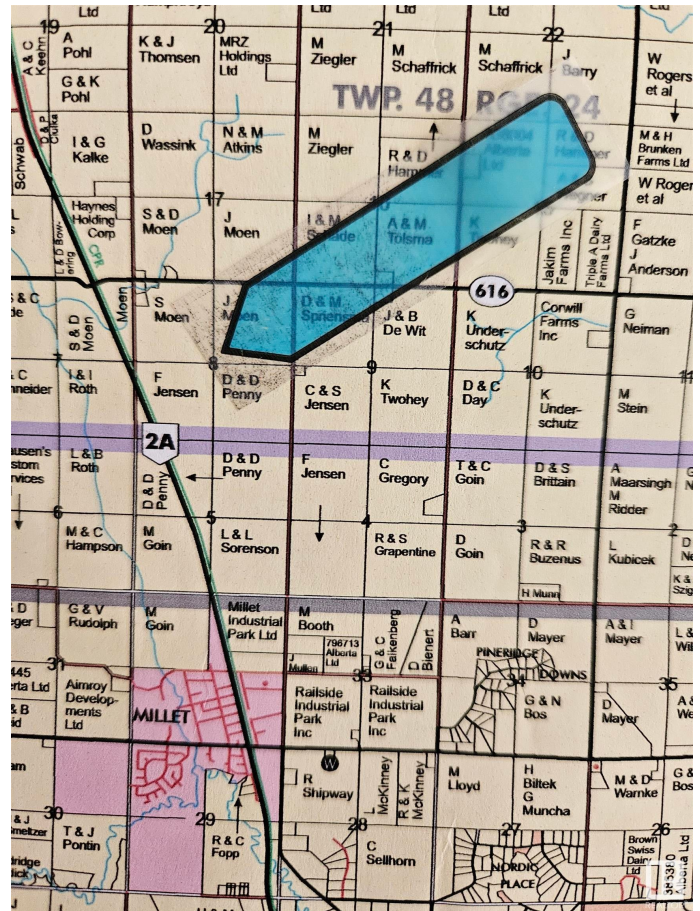
MLS® #	E4426993
Price	\$749,900
Bathrooms	0.00
Acres	130.85
Type	Rural
Sub-Type	Vacant Lot/Land
Status	Active

## Community Information

Address	Hwy 2a And Rr 245
Area	Rural Leduc County
Subdivision	None
City	Rural Leduc County
County	ALBERTA
Province	AB
Postal Code	T0C 1Z0

## Exterior

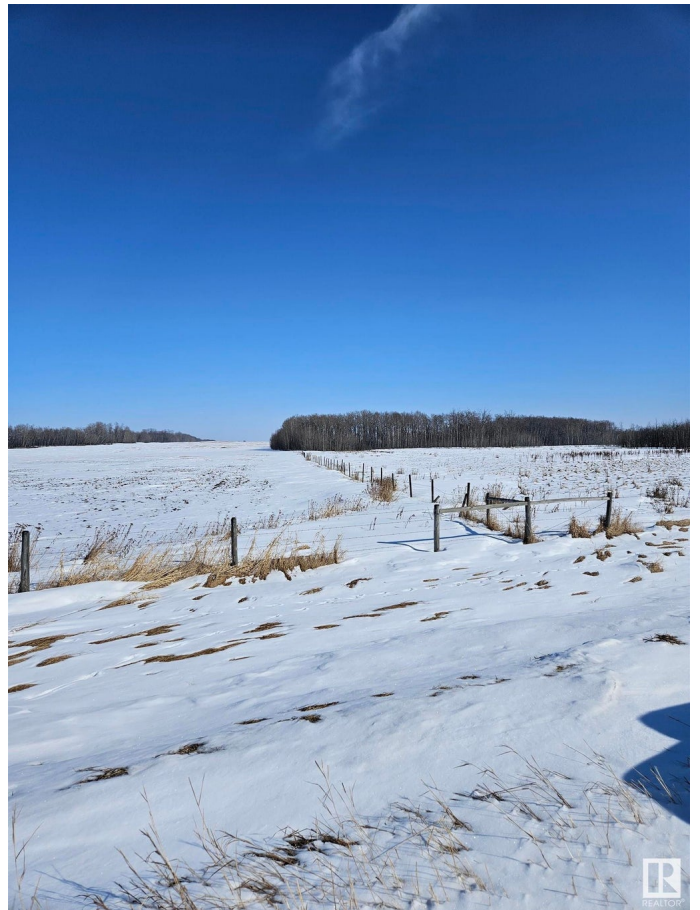
Exterior Features    Airport Nearby, Fenced, Flat Site, Golf Nearby, Shopping Nearby, See



Remarks

**Additional Information**

Date Listed            March 21st, 2025  
Days on Market        100  
Zoning                  Zone 80



DATA IS DEEMED RELIABLE BUT IS NOT GUARANTEED ACCURATE BY THE REALTORS® ASSOCIATION OF EDMONTON. COPYRIGHT 2025 BY THE REALTORS® ASSOCIATION OF EDMONTON. ALL RIGHTS RESERVED. Trademarks are owned or controlled by the Canadian Real Estate Association (CREA) and identify real estate professionals who are members of CREA (REALTOR®, REALTORS®) and/or the quality of services they provide (MLS®, Multiple Listing Service®)

Listing information last updated on June 29th, 2025 at 1:47pm MDT