

# **\$149,900 - 409 56228 Rge Rd 42, Rural St. Paul County**

MLS® #E4437551

**\$149,900**

0 Bedroom, 0.00 Bathroom,  
Rural on 10.01 Acres

Laurier Lake, Rural St. Paul County, AB

10.01 acres of land ready to support your dream home. What better place to lay down your roots than at the lake, Laurier Lake to be exact! Sitting in the quiet subdivision of Forest Lawn Estates, this parcel offers easy lake access and unlimited fun for the kids and yourself.

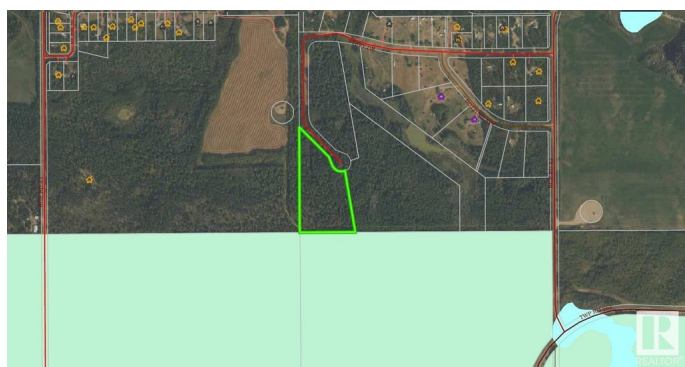
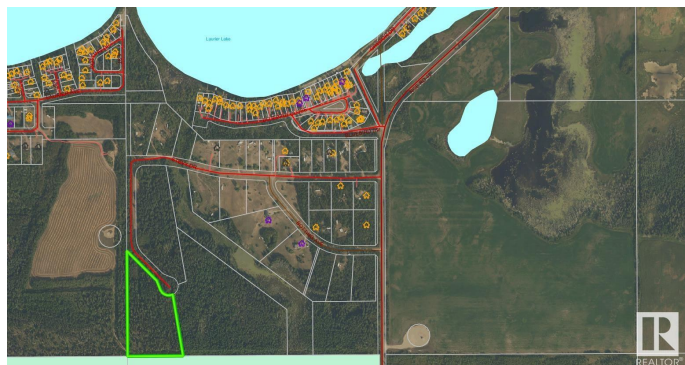
## **Essential Information**

MLS® #	E4437551
Price	\$149,900
Bathrooms	0.00
Acres	10.01
Type	Rural
Sub-Type	Vacant Lot/Land
Status	Active

## **Community Information**

Address	409 56228 Rge Rd 42
Area	Rural St. Paul County
Subdivision	Laurier Lake
City	Rural St. Paul County
County	ALBERTA
Province	AB
Postal Code	T0A 1M0

## **Interior**



Heating                      See Remarks

**Exterior**

Exterior Features    Private Setting

**Additional Information**

Date Listed                May 21st, 2025

Days on Market        41

Zoning                      Zone 60

DATA IS DEEMED RELIABLE BUT IS NOT GUARANTEED ACCURATE BY THE REALTORS® ASSOCIATION OF EDMONTON. COPYRIGHT 2025 BY THE REALTORS® ASSOCIATION OF EDMONTON. ALL RIGHTS RESERVED.Trademarks are owned or controlled by the Canadian Real Estate Association (CREA) and identify real estate professionals who are members of CREA (REALTOR®, REALTORS®) and/or the quality of services they provide (MLS®, Multiple Listing Service®)

Listing information last updated on July 1st, 2025 at 5:47am MDT