

Courtesy Of Gina Lapointe Of Panache Realty Ltd.

\$634,900 - 9 46511 Twp Rd 611, Rural Bonnyville M.D.

MLS® #E4442445

\$634,900

5 Bedroom, 3.00 Bathroom, 2,080 sqft

Rural on 1.05 Acres

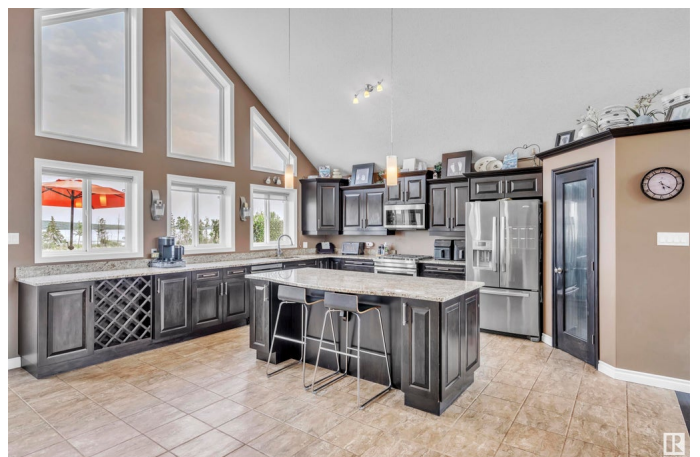
Chateau Estates, Rural Bonnyville M.D., AB

Spectacular Moose Lake Views! Experience breathtaking beauty in this custom-built 2080 sq ft air conditioned home. Nestled on a generous one-acre lot overlooking Moose Lake, this 5-bedroom, 3-bathroom haven delivers space and style in equal measure. The impressive and open layout features stunning 20" vaulted ceilings and a freshly finished walkout basement perfect for entertainment. Culinary enthusiasts will appreciate the well-appointed kitchen with gorgeous granite countertops, sleek stainless steel appliances, and a professional gas range ideal for hosting memorable gatherings. The property's unique offerings extend outdoors with a heated triple car garage accessed by a concrete driveway. Movie nights and game days find their perfect setting in the tastefully finished basement. Welcome to Chateau Estates. You'll love it here!

Built in 2011

Essential Information

MLS® #	E4442445
Price	\$634,900
Bedrooms	5
Bathrooms	3.00
Full Baths	3
Square Footage	2,080



Acres	1.05
Year Built	2011
Type	Rural
Sub-Type	Detached Single Family
Style	Bi-Level
Status	Active

Community Information

Address	9 46511 Twp Rd 611
Area	Rural Bonnyville M.D.
Subdivision	Chateau Estates
City	Rural Bonnyville M.D.
County	ALBERTA
Province	AB
Postal Code	T9N 2H5

Amenities

Features	Air Conditioner, Deck, Fire Pit, Hot Water Natural Gas, Parking-Visitor, Vaulted Ceiling, Vinyl Windows, Natural Gas BBQ Hookup
----------	---

Interior

Interior Features	ensuite bathroom
Heating	Forced Air-1, Natural Gas
Stories	2
Has Basement	Yes
Basement	Full, Finished

Exterior

Exterior	Concrete
Exterior Features	Boating, Flat Site, Golf Nearby, Lake Access Property, Lake View, Landscaped, No Back Lane
Construction	Concrete
Foundation	Wood

Additional Information

Date Listed	June 13th, 2025
Days on Market	16
Zoning	Zone 65

DATA IS DEEMED RELIABLE BUT IS NOT GUARANTEED ACCURATE BY THE REALTORS® ASSOCIATION OF EDMONTON. COPYRIGHT 2025 BY THE REALTORS® ASSOCIATION OF EDMONTON. ALL RIGHTS

RESERVED.Trademarks are owned or controlled by the Canadian Real Estate Association (CREA) and identify real estate professionals who are members of CREA (REALTOR®, REALTORS®) and/or the quality of services they provide (MLS®, Multiple Listing Service®)

Listing information last updated on June 29th, 2025 at 8:47am MDT