

\$619,475 - 38 Melrose Place, Sherwood Park

MLS® #E4444652

\$619,475

5 Bedroom, 3.50 Bathroom, 1,912 sqft

Single Family on 0.00 Acres

Mills Haven, Sherwood Park, AB

Welcome to this fully renovated turn key home in the heart of Mills Haven! Backing onto green space, a massive park & school, this 5 bed, 3.5 bath home offers over 2,900 total sqft of beautifully finished space. Every inch has been upgradedâ€”new roof, eaves, soffit, fascia, triple-pane windows & doors on main floor, exterior paint, added attic insulation, hot water tank. The main floor offers new flooring, added pot lights, upgraded electrical panel, and a modern kitchen with premium appliances. All bathrooms have been completely redone with stylish finishes. Enjoy A/C in the summer, and a fully finished basement for extra living space. Sitting in a quiet cul-de-sac, the landscaped backyard opens to green spaceâ€”ideal for families or anyone craving privacy and outdoor connection. A true move-in ready opportunity in one of Sherwood Parkâ€™s most established neighborhoods. Located near schools, parks and shopping this is a perfect family home.

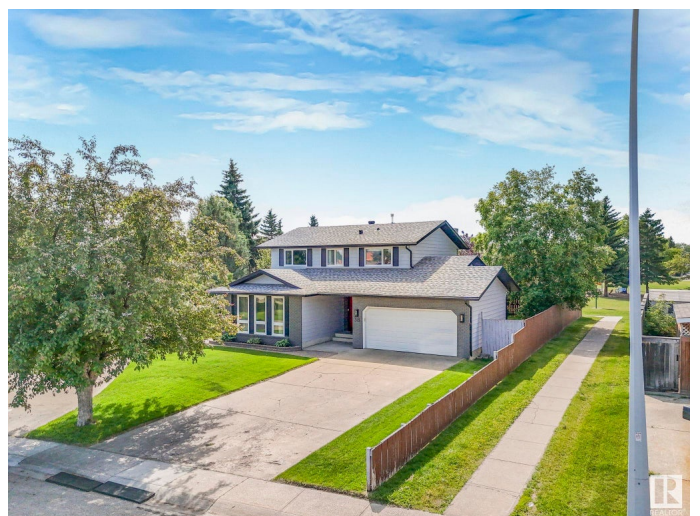
Built in 1975

Essential Information

MLS® # E4444652

Price \$619,475

Bedrooms 5



Bathrooms	3.50
Full Baths	3
Half Baths	1
Square Footage	1,912
Acres	0.00
Year Built	1975
Type	Single Family
Sub-Type	Detached Single Family
Style	2 Storey
Status	Active

Community Information

Address	38 Melrose Place
Area	Sherwood Park
Subdivision	Mills Haven
City	Sherwood Park
County	ALBERTA
Province	AB
Postal Code	T8A 3T7

Amenities

Amenities	Air Conditioner, Bar, No Smoking Home, See Remarks
Parking	Double Garage Attached

Interior

Interior Features	ensuite bathroom
Appliances	Air Conditioning-Central, Dishwasher-Built-In, Dryer, Garage Opener, Refrigerator, Stove-Electric, Washer, Window Coverings
Heating	Forced Air-1, Natural Gas
Fireplace	Yes
Fireplaces	See Remarks
Stories	3
Has Basement	Yes
Basement	Full, Finished

Exterior

Exterior	Wood, Stone, Stucco, Vinyl
Exterior Features	Backs Onto Park/Trees, Cul-De-Sac, Fenced, Golf Nearby, Landscaped, Playground Nearby, Public Transportation, Schools, Shopping Nearby

Roof	Asphalt Shingles
Construction	Wood, Stone, Stucco, Vinyl
Foundation	Slab

School Information

Elementary	Madonna Elementary School
------------	---------------------------

Additional Information

Date Listed	June 27th, 2025
Days on Market	6
Zoning	Zone 25

DATA IS DEEMED RELIABLE BUT IS NOT GUARANTEED ACCURATE BY THE REALTORS® ASSOCIATION OF EDMONTON. COPYRIGHT 2025 BY THE REALTORS® ASSOCIATION OF EDMONTON. ALL RIGHTS RESERVED.Trademarks are owned or controlled by the Canadian Real Estate Association (CREA) and identify real estate professionals who are members of CREA (REALTOR®, REALTORS®) and/or the quality of services they provide (MLS®, Multiple Listing Service®)

Listing information last updated on July 3rd, 2025 at 1:02am MDT